

## Description

Product Name	Indoor Double Tier Bicycle Storage Rack
Material	carbon steel/stainless steel
Size	W1977*D1130(depend on your parking space)*H2500mm
Capacity	according customer space size,we can design according the size
Finish	Powder coated ,hot-galvanized/electric polish
Packing	Iron frame
MOQ	10 Sets
OEM/ODM	offered

“Southern has introduced a double deck cycle rack for the first time at Sutton railway station.

The new 2 Tier System holds 40 cycles in the same footprint as the old rack - doubling the amount of parking spaces, is covered by a canopy to keep the worst of the rain off and is covered by 24-hour CCTV.

Southern’s Project Manager, Paul Best said: “We are delighted with the new rack. It’s innovative in its design and is well used by our cycling passengers and, as a result, we are now looking at more stations where this kind of facility would be of tremendous benefit to our passengers.” The new rack at Sutton was installed following comments from passengers, local authorities and user groups who contributed to the formation of Sutton’s Station Travel Plan. The plan looks at ways to encourage passengers to travel to and from the station in a more sustainable way than the car, and ways in which overall public transport integration at the station can be enhanced. Southern has plans to extend the two-tier system to other stations on its network including Horsham and Haywards Heath.”

Now a new [bike rack](#) undisappear in our company .it is called [double-deck stackable bike rack](#).

## Features & Benefits

- Space efficient - it stores two bikes directly above each other
- Custom-made for specific sites
- Easy-to-use, safe and organized parking
- Individual racking - one bike per space
- German design and quality
- Patented gripping mechanism keeps the bike securely in place
- Mount up to 10 bikes with 5 secured above the other 5
- Freestanding design requires no anchors
- Easy assembly
- Deep wheel trays guide bike into rack
- Full-length wheel trays keep bikes upright
- Staggered bike positioning saves space and provides added clearance between bikes
- Modular design allows for easy expansion with multiple racks side by side
- Locking Stretch Rack includes solid steel lock rod

- Accepts cable locks and U-locks (locks not included)

## **Special:**

- Capacity: 6, 8, or 10 Bikes
- Fits Tire Width: Up to 2.3" mountain bike tires
- Tray Length: 64.3"
- Required space from wall: 65"
- Minimum ceiling height: 8 Feet
- Bike Spacing: 14," 15," or 18"
- Locking rod diameter (locking version only): 0.38"
- Footprints:
  - 54" x 63" holds up to 6 or 8 bikes
  - 72" x 63" holds up to 8 or 10 bike

## **Warranty:**



### **Lifetime Warranty**

When we say "We bring the power of cycling to life, we mean it". Talk's cheap. That's why you'll see lifetime warranties on our Suzhou Pioneer racks. Not three years, not five, but for as long as the original buyer owns it. Because we firmly believe that cycling is a lifetime sport. So why settle for anything less from the equipment that helps you enjoy it.

### **Official Warranty Term**

Suzhou Pioneer vehicle Co.,Ltd, warrants our product to the original consumer to be free from defects in materials and workmanship. Please retain your sales slip for your records as proof of purchase will be required.

### **Warranty Term**

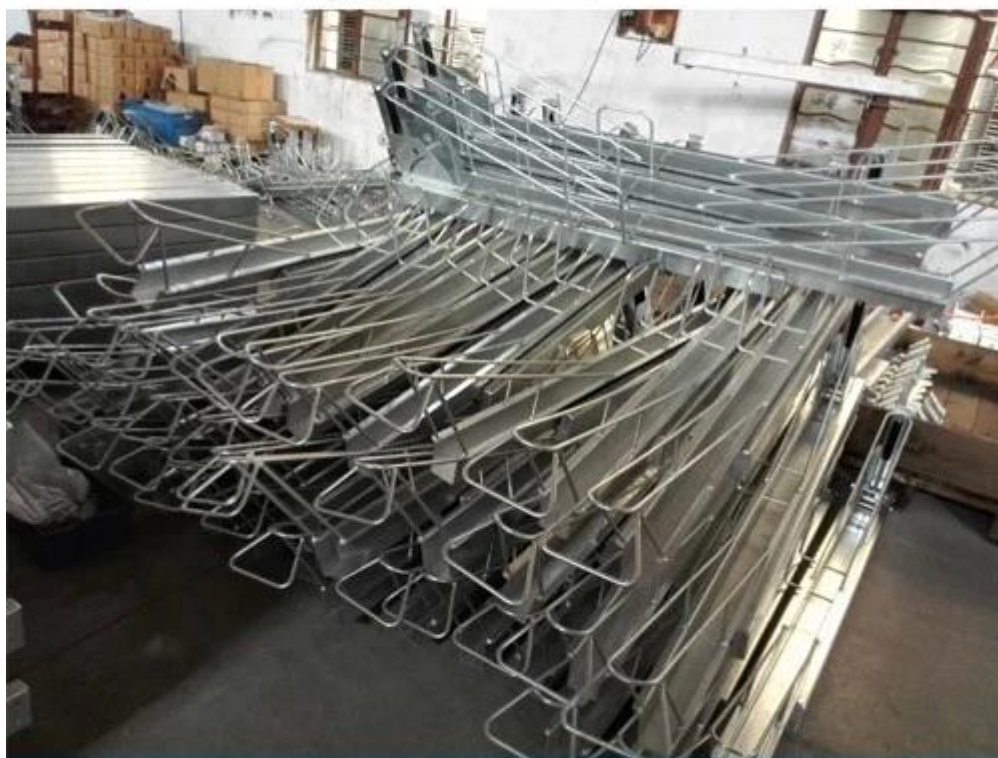
Auto Racks: As long as you own product

We are looking forward to cooperation with you!

Any inquiry is welcome!



[www.chinabikerack.com](http://www.chinabikerack.com)



[www.chinabikerack.com](http://www.chinabikerack.com)



[www.chinabikerack.com](http://www.chinabikerack.com)